

Features of AMBUS® Data

AMBUS® Data is a system program for remote reading and management of M-Bus networks. Two innovations ensure that the system is open in every direction:

- Individual meter drivers guarantee perfect communication with every M-Bus meter.
- The export function stores the meter data in an MS-ACCESS database. Your visualisation, charging or facility management software can access the consumption data directly via the **ODBC database interface**.

Open for all meters

The **meter drivers** are a revolutionary innovation in the M-Bus world.

This makes compatibility problems a thing of the past.

Communication with the meter and the data it contains are described in the meter driver.

Specific individual features and special performance characteristics such as additional channels, special tariff functions, addressing and parameterisation options can be taken into account for each meter.

The meter drivers guarantee the correct interpretation and uniform presentation of all data called up via the bus.

The drivers, which are included in the delivery scope of AMBUS® Data, ensure perfect support not only for Aquametro meters, but also for all common meters to measure heat, water, power and other variables.

Because the drivers are not a fixed component of the actual program, new additional drivers can be loaded whenever they are required with no need to update the program.

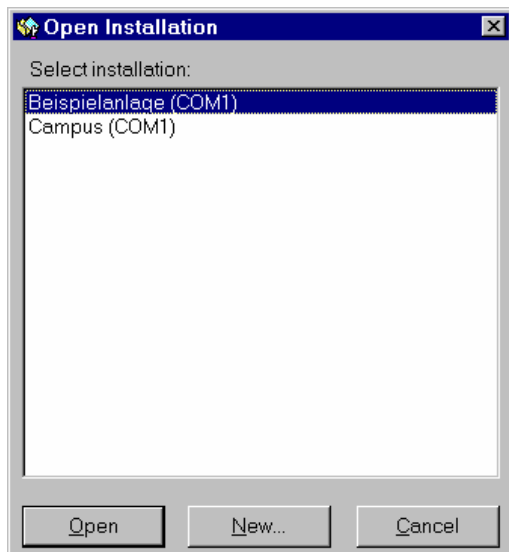
This ensures that future meters are also supported.

Data export

AMBUS® Data can be used as a **database server** to read the meters and store the data in an ACCESS database. All common database programs can access the meter data directly via the standardised ODBC interface.

Overview of functions

Managing installations



AMBUS® Data can manage and save the data of various installations independently of one another.

Access to the installation is via a direct RS232, RS485 or modem connection.

The communication and dialling parameters are stored individually for each installation.

Entering meters

The meters can be entered manually using their primary or secondary address, or with the help of an easy-to-use search function.

Managing meters

The built-in master data management function enables meters to be assigned to customers and installation locations. This feature is also helpful for monitoring the inspection periods. At the press of a button, the program will check all connected meters for errors. The primary address, comment field, time and date can be programmed provided that the meter supports these features.

Reading meters

Meters can be read individually or in groups.

The meter list shows at a glance the most important information about the meters.

Name	E	Kommentar	Zählertyp	Medium	Status	Pri...	Sekundär	Stand 1	Stand 2	Wert 1	W...	Wert 3
		HZG WOHNUNG 1	AMTRON-N	Wärme	Aktiv	0	03532705	29353 k...	8082400 l	0.97078...	26...	44.7802...
		HZG ATELIER 11	AMTRON-N	Wärme	Aktiv	0	03532706	2 kWh	100 l	0 kW	0 l/h	10.4465...
		HZG WOHNUNG 4	AMTRON-N	Wärme	Aktiv	0	03532709	29089 k...	8166900 l	0.86324...	12...	44.8093...
		HZG WOHNUNG 3	AMTRON-N	Wärme	Aktiv	0	03532710	21300 k...	1034540...	1.12718...	27...	44.7028...
		HZG WOHNUNG 6	AMTRON-N	Wärme	Aktiv	0	03532711	31372 k...	9726200 l	3.09400...	34...	44.6992...
		HZG WOHNUNG 8	AMTRON-N	Wärme	Aktiv	0	03532712	30677 k...	1051270...	1.83026...	32...	44.6866...
		HZG WOHNUNG 5	AMTRON-N	Wärme	Aktiv	0	03532713	27931 k...	7521500 l	0.67211...	12...	44.6815...
		HZG WOHNUNG 10	AMTRON-N	Wärme	Aktiv	0	03532714	38661 k...	5139900 l	2.87563...	33...	44.7637...
		HZG WOHNUNG 9	AMTRON-N	Wärme	Aktiv	0	03532715	56063 k...	8154300 l	6.99804...	45...	44.5246...
		HZG WOHNUNG 7	AMTRON-N	Wärme	Aktiv	0	03532716	19573 k...	6863300 l	1.13369...	23...	44.7106...
		HZG WOHNUNG 2	AMTRON-N	Wärme	Aktiv	0	03532717	19587 k...	5789800 l	0.75889...	12...	44.7422...
		BWW WOHNUNG 9	SAPHIR-N	Wasser	Aktiv	0	03537231	61800 l		0 l/h		
		BWW WOHNUNG 8	SAPHIR-N	Wasser	Aktiv	0	03537233	239700 l		0 l/h		
		BWW WOHNUNG 10	SAPHIR-N	Wasser	Aktiv	0	03537234	73000 l		0 l/h		
		BWW WOHNUNG 9	SAPHIR-N	Wasser	Aktiv	0	03537235	197500 l		0 l/h		
		BWW WOHNUNG 6	SAPHIR-N	Wasser	Aktiv	0	03537236	93700 l		0 l/h		
		BWW WOHNUNG 10	SAPHIR-N	Wasser	Aktiv	0	03537237	48000 l		0 l/h		
		BWW WOHNUNG 2	SAPHIR-N	Wasser	Aktiv	0	03537238	50000 l		0 l/h		
		BWW WOHNUNG 1	SAPHIR-N	Wasser	Aktiv	0	03537239	51400 l		0 l/h		
		BWW WOHNUNG 5	SAPHIR-N	Wasser	Aktiv	0	03540055	162200 l		0 l/h		
		BWW WOHNUNG 7	SAPHIR-N	Wasser	Aktiv	0	03866405	2700 l		0 l/h		

The data are uniformly sorted and shown clearly in the table: the first column always shows the main meter reading (for example: energy for heat or power meters, and volume for water or gas meters), depending on availability with the next columns showing other meter readings and present values - but always in the same sequence, regardless of the manufacturer and meter type.

For multi-tariff meters and multi-channel meters, all tariffs and channels are shown as if they were individual meters.

The same measurement variables are always shown in the same units.

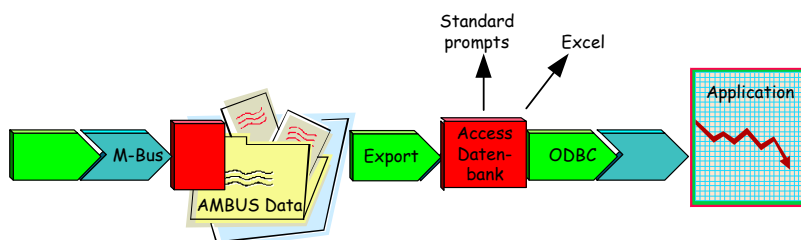
Additional information, such as maxima, service hours counter, error status, etc. can be viewed in the Attributes window.

Accessing data

Most database programs can easily access the stored data via the ODBC interface using the export-generated function of the ACCESS database.

Other programs can access the meter data directly via the standardised database interface.

This makes it very easy for evaluating, visualising or forwarding the meter data to a charging or control system.



Standard prompts

Along with the export-generated ACCESS database, various standard prompts and an EXCEL export function are available for controlling and logging the stored data.



Automatic program call-up and batch processing

Using line commands, the AMBUS® Data can be controlled by any desired user program.

When combined with a time control, AMBUS® Data becomes a high-performance data logger. This means, for example, that you can call up and read all your installations every night, every hour or even at shorter intervals. You can also use AMBUS® Data as a database server for your meter data. With your application controlling the AMBUS® Data, the unit reads the desired installations or meters and provides you with the meter data via the ODBC interface.

Your benefit: you concentrate on your application, while AMBUS® Data relieves you of M-Bus programming and the technical details of the meters.

A0.05 - 10.2004 - Art. No. 11717

Aquametro AG

Ringstrasse 75
CH-4106 Therwil
Tel. 061 725 11 22
Fax 061 725 15 95
info@aquametro.com

Aquametro SA

Rue du Jura 10
CH-1800 Vevey
Tel. 021 923 51 30
Fax 021 922 58 44
info@aquametro.com

Aquametro Messtechnik GmbH

Zum Panrepel 24
D-28307 Bremen
Tel. 0421 / 871 64-0
Fax 0421 / 871 64-19
info.amd@aquametro.com

Aquametro BELGIUM SPRL

Bd. Lambermont 131
B-1030 Bruxelles
Tel. 02 / 241 62 01
Fax 02 / 216 22 63
info.amb@aquametro.com

Aquametro s.r.o.

Prosecká 811 / 76a
CZ-190 00 Praha
Tel. 02 / 86 88 77 78
Fax 02 / 86 88 95 59
info.amc@aquametro.com